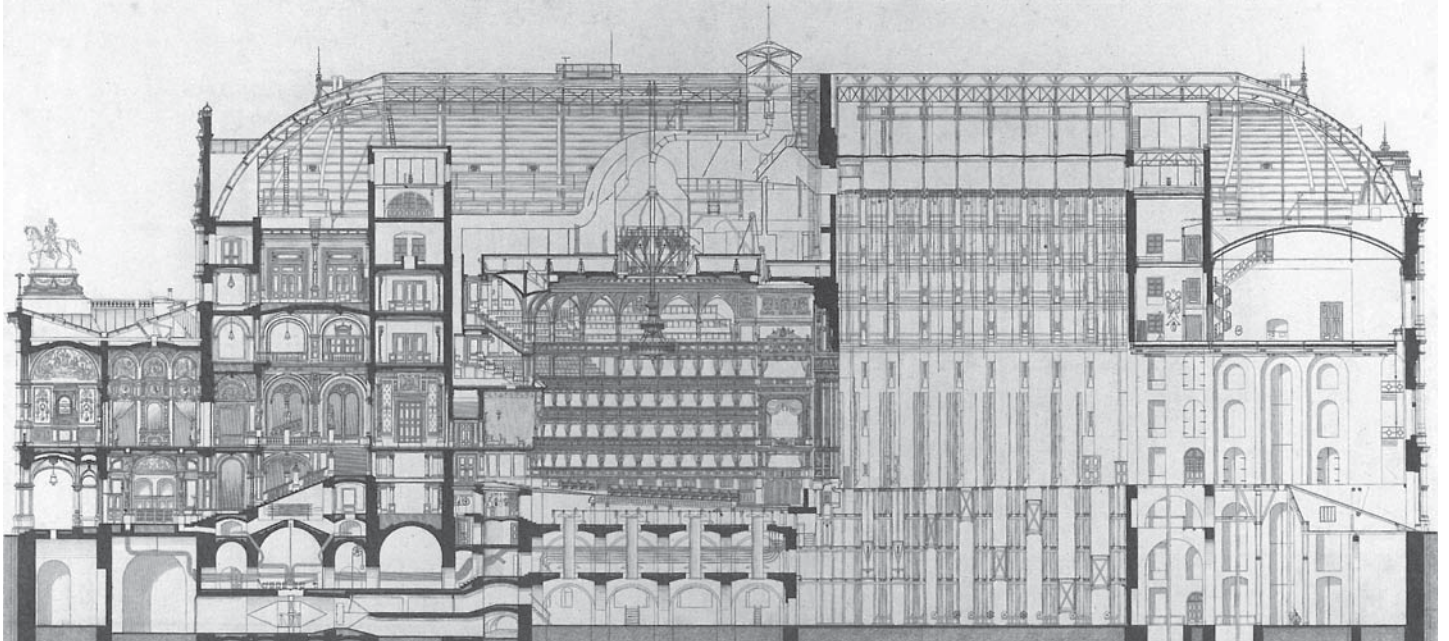


01 MUSICAL MANIFOLDS:

WS 2007 Universität für angewandte Kunst, Wien, o. Univ. Prof. Greg Lynn

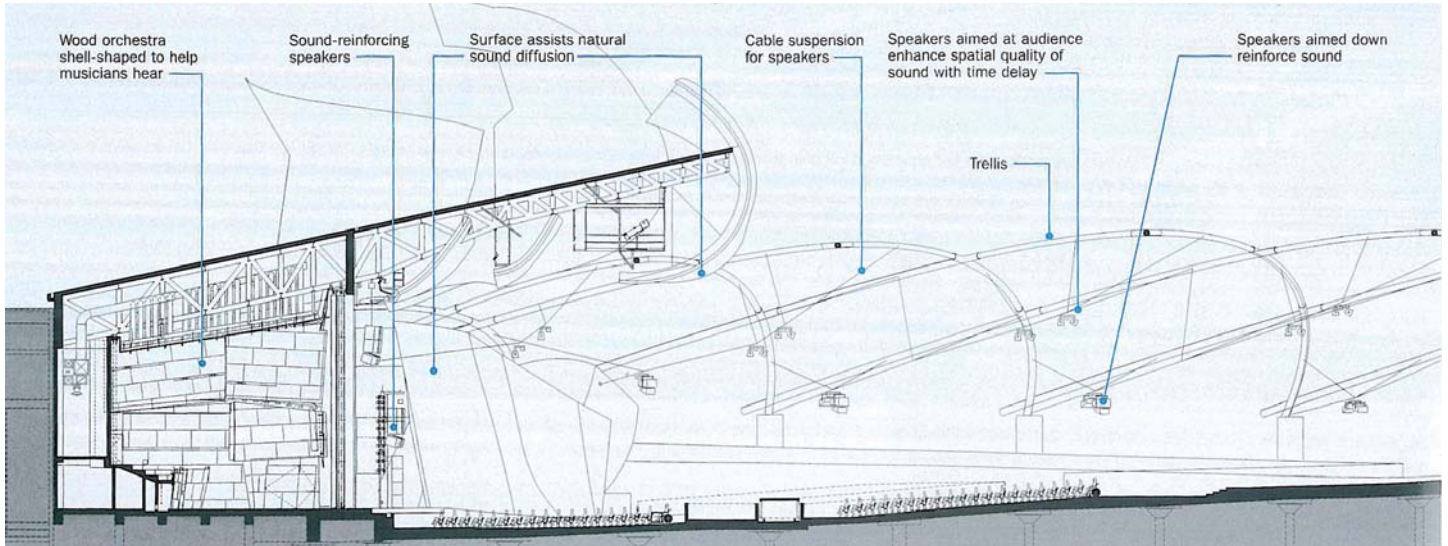


The space collective project was an investigation of section and volumetric organization in a radically remote context, where basic constraints such as gravity and horizon had to be reinvented. This semester we will tackle the equally complex architecture of an earthbound institutional building in all its functional richness. As a building type, concert halls stage an array of activities and concerns: they channel multiple crowds, orchestrate the spectacle of a performance each night, and serve as cultural and urban monuments. Sited across from the Stadtooper on the Ring in Vienna, our project will integrate an additional set of complexities: a tight urban site, central Vienna's 19th century context, the typology of a ring building, and the landscape of both Karlsplatz and an outdoor performance venue on the site.

As a result, we will begin by studying context in two senses: the site and state-of-the-art concert halls. Through a large, museum-quality site model, we will gain an understanding of traffic and pedestrian flows, the topography of the ring and Karlsplatz, the surrounding architecture of eclecticism and the interior organization of the Opera. At the same time, we will survey concert halls in Vienna, Paris and elsewhere to understand how they orchestrate functional relationships including: seating to stage, hall to lobby, massing to landscape, stage to back of house, circulation for performers and audience, front and back facades and acoustics. Over the course of the semester, we will move from massing and organization in the first weeks, to geometry and expression on the facade by midterm. Finally, we will focus on the fine-grained functionality of the hall, lobby and other interior spaces. This developing complexity over the course of the semester should result in contemporary architecture that is as multifaceted and rich as its historical surroundings.

02 MUSICAL MANIFOLDS: Task 01

WS 2007 Universität für angewandte Kunst, Wien, o. Univ. Prof. Greg Lynn



Start:

2:00pm Friday, 5.10.07

Review: Greg

10:00 Wednesday, 17.10.07

Class Deliverables:

- Group01 Site Model (50 %)
 - scale 1:100
 - split to reveal section
 - museum quality
 - material: basswood
- Group02 Detail Model of Adjacent Buildings (50%)
 - scale 1:100
 - Opera House (split to reveal section)
 - museum quality
 - material: basswood
- Group03 Program and Furniture Plan Elements
Stage Section Elements (100%)

Individual Deliverables:

- Longitudinal Section
 - scale 1:50
 - including Opera and Karlsplatz
 - all line work

Precedent List:

- The Paris Opera House, Charles Garnier
- Staatoper, Eduard van der Null and August Siccard von Siccardenburg
- Musikverein, Theophil von Hansen
- Carnegie Hall, New York
- Berlin Philharmonic, Hans Scharoun
- Disney Concert Hall, Frank Gehry
- Elbe Philharmonic, Herzog De Mueron
- Paris_Philharmonic, Jean Nouvel
- Copenhagen Concert Hall, Jean Nouvel
- Hollywood Bowl, Frank Gehry/ Hodgets+Fung
- Millenium Park, Frank Gehry
- Lincoln Center, Johnson
- Avery Fisher Hall, Dillier Scofidio
- Parco Della Musica, Rome, Renzo Piano
- Taichung Opera House, Toyo Ito
- Sydney Opera House, Jorn Utzon
- Performing Arts Center, Bard College, Frank Gehry
- Fort Wayne Fine Arts Center, Louis Kahn
- Casa da Musica, OMA
- Matsumoto Performing Arts Center, Toyo Ito
- Torre Vieja Theater, FOA
- Guthrie, Nouvel
- Workers Theater, Melnikov
- La Scala, Giuseppe Piermarini
- Cardiff Bay Opera House Competition Entry, OMA

03 MUSICAL MANIFOLDS: aerial view

WS 2007: Universität für angewandte Kunst, Wien, o. Univ. Prof. Greg Lynn



04 MUSICAL MANIFOLDS: site plan

WS 2007 Universität für angewandte Kunst, Wien, o. Univ. Prof. Greg Lynn

.dwg file to be provided



05 MUSICAL MANIFOLDS: schedule

WS 2007 Universität für angewandte Kunst, Wien, o. Univ. Prof. Greg Lynn

Oct.	05.10.07fr	Studio Kick Off: Lecture Semester Task DELIVERED_Part 01
	08.10.07mo	Workshop: Florencia Pita 2pm-4pm
	09.10.07tu	Workshop: Florencia Pita 11am-1pm Tour: 2pm: Musikverein Tour: 4pm: Wiener Staatoper
	10.10.07we	Workshop: Florencia Pita 3pm-4pm
	11.10.07th	Site Model: work session
	16.10.07tu	Desk Crits: Site_ Longitudinal Section
	17.10.07we	Review: Part 01: Greg
	18.10.07-23.10.07	Study Trip (Paris)
	25.10.07th	Desk Crits: Massing
	30.10.07tu	Lecture: Acoustics
Nov.	01.11.07th	No Class: Holiday
	06.11.07tu	Desk Crits:
	08.11.07th	Desk Crits:
	13.11.07tu	Pin-Up:
	15.11.07th	Desk Crits
	20.11.07tu	Desk Crits
	22.11.07th	Desk Crits
	27.11.07tu	Mid-Term (Tentative): Greg
	29.11.07th	Desk Crits
Dec.	04.12.07tu	Desk Crits
	06.12.07th	Lecture: Norman Klein Workshop: cultural tourism-urban culture
	07.12.07fr	Lecture: Norman Klein
	11.12.07tu	Desk Crits
	13.12.07th	Visualization Workshop:
	18.12.07th	Desk Crits
	19.12.07- 06.01.08	Winter Break
Jan.	08.01.08tu	Desk Crits
	10.01.08th	Pin-Up: Mock-up Presentation
	15.01.08tu	Desk Crits
	17.01.08th	Desk Crits
	22.01.08tu	Desk Crits
	24.01.08th	Review: Final??